

PCV - PATTERN CHANGER VALVE

INTRODUCTION

Our new Pattern Changer Valve is a mechanically operated valve with 4 outlet ports and 4 inlet ports. This Valve allows for quick joystick pattern changes without switching hoses.

The Pattern Changer Valve provides 8-way, 2 position control of pilot signals. It is designed to be used where switching pilot pressure patterns may be desirable.

Our Pattern Changer Valve eliminates the equipment downtime, labor and environmental hazards involved in switching hoses. It is also purely mechanical, making installation quick and easy while eliminating the possibility of an electronic failure resulting in undesirable machine response. There are 4 inlet ports and 4 outlet ports. User merely turns the handle 90 degrees to change the joystick pattern.

PERFORMANCE

The **PCV-07** is intended for pilot applications only. Specific information about pressure drop may be obtained from Holmbury USA.

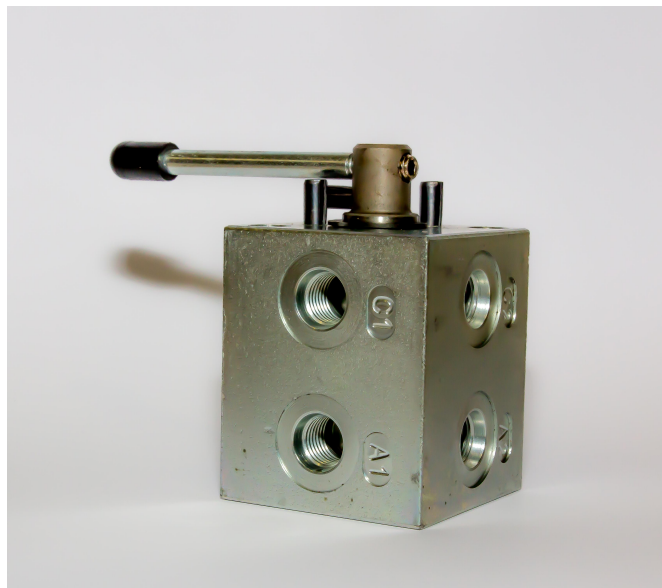
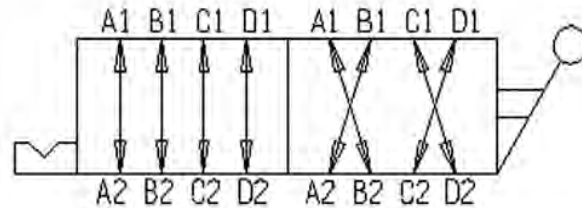
FEATURES

- Compact
- Simple, reliable design – no electronics
- Easy to install
- Detent locks position into place

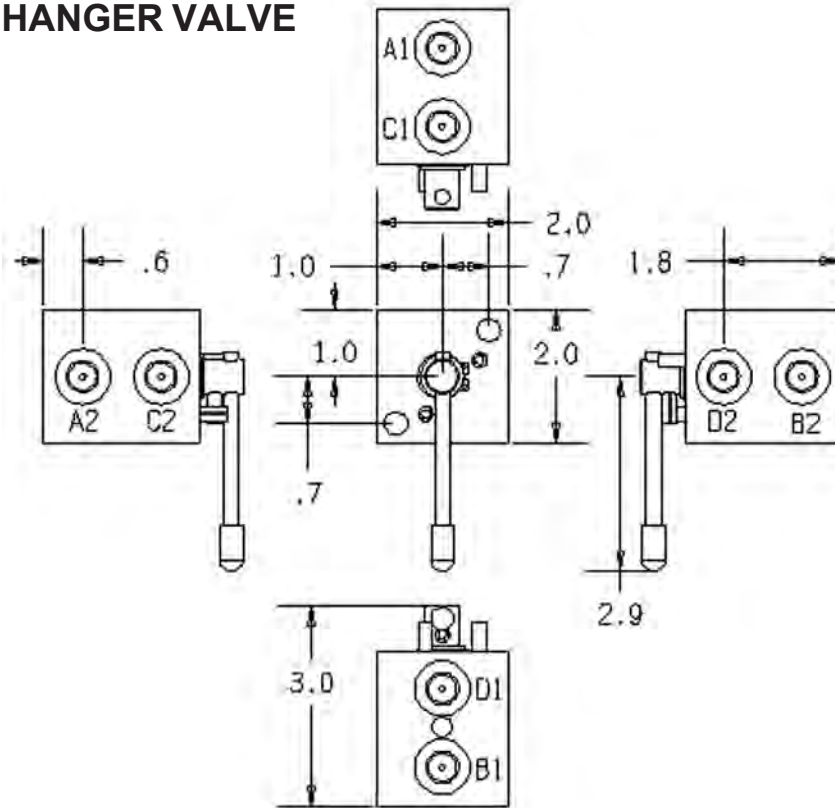
CONSTRUCTION

- Rated Pressure – 3,000 PSI
- Rated Flow – Pilot
- Ports – SAE-4ORB (7/16-20)
- Weight – 2.4 lbs.
- Manifold Material – Steel
- Internal Parts – Ground/Hardened Steel

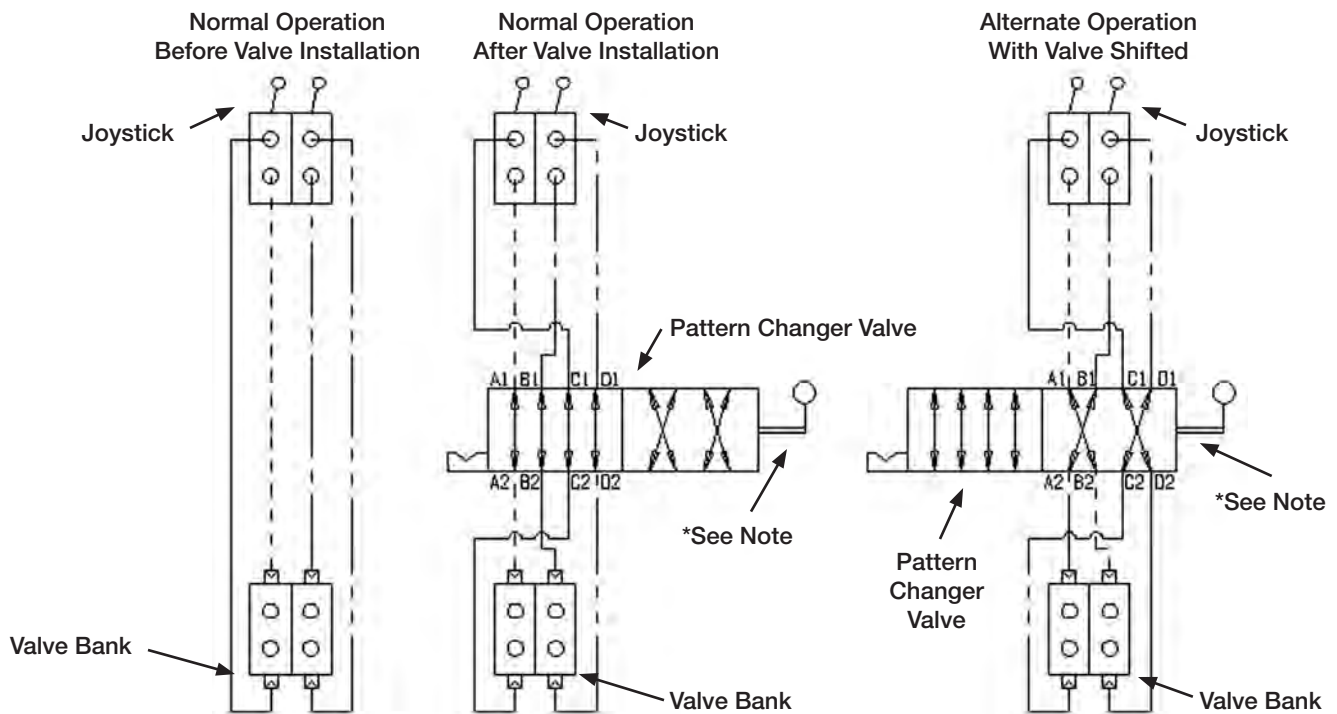
SYMBOL



PCV - PATTERN CHANGER VALVE



Pattern Changer Valve: Installation & Operational Diagram



***NOTE:**
Rotate valve handle 90 degrees to change joystick pattern.

NOTE: All dimensions are for reference only. Contact Fluid Connectors WA for certified dimensions. Holmbury's Pattern Changer Valve is intended for pilot applications only. Contact Fluid Connectos WA regarding specific information about pressure drop.